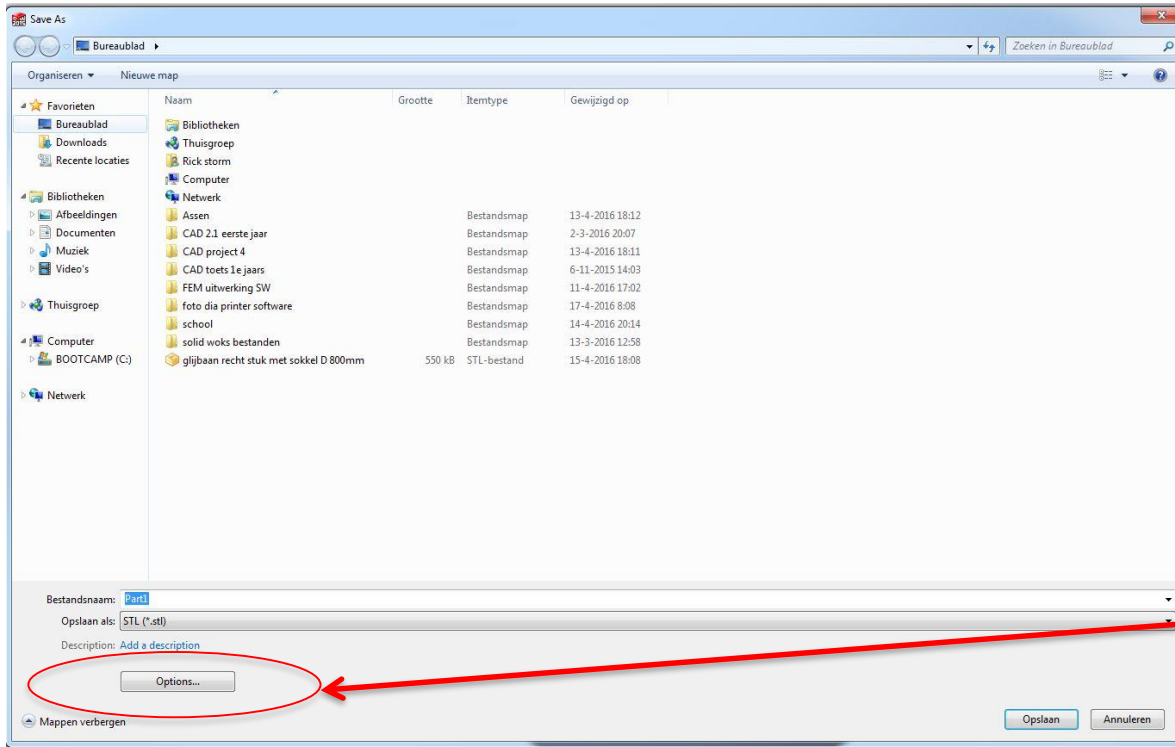


STL bestand

STL:

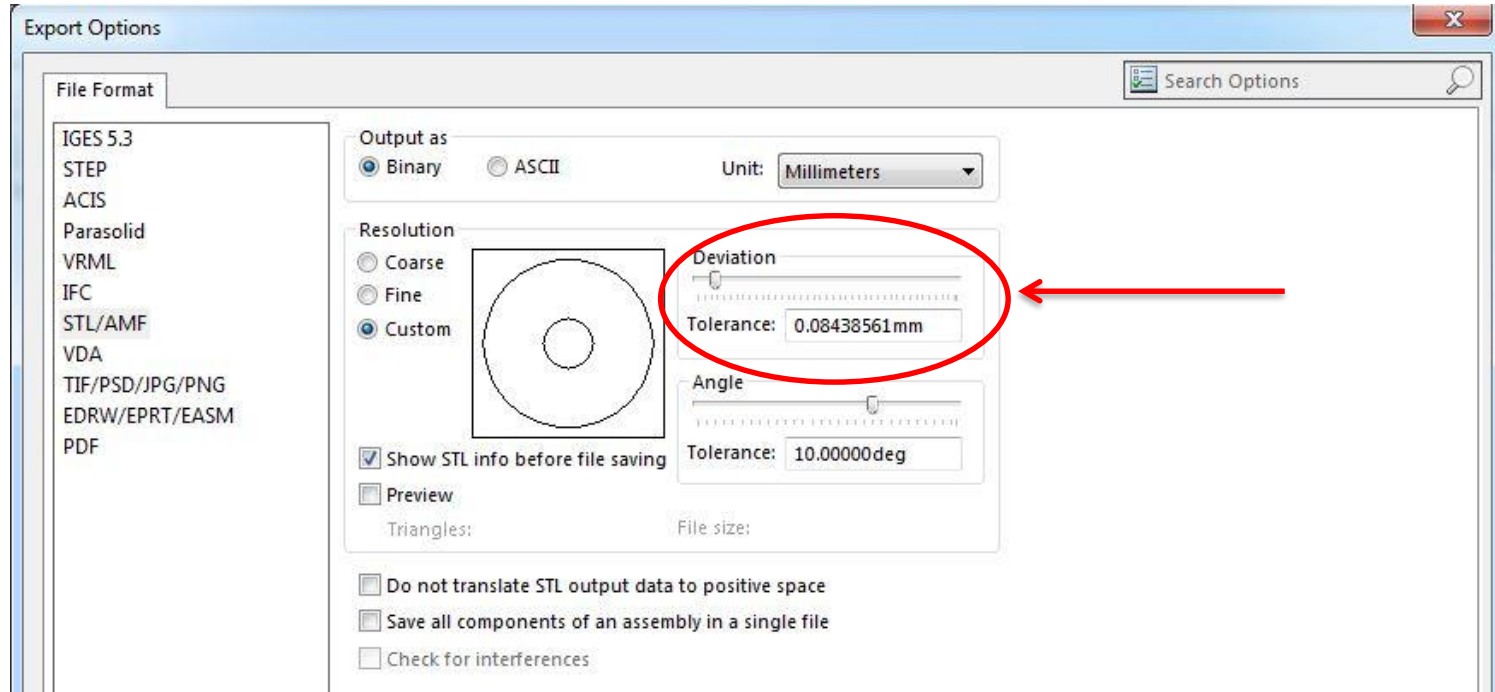
Standard Tessellation Language

Bij solid works

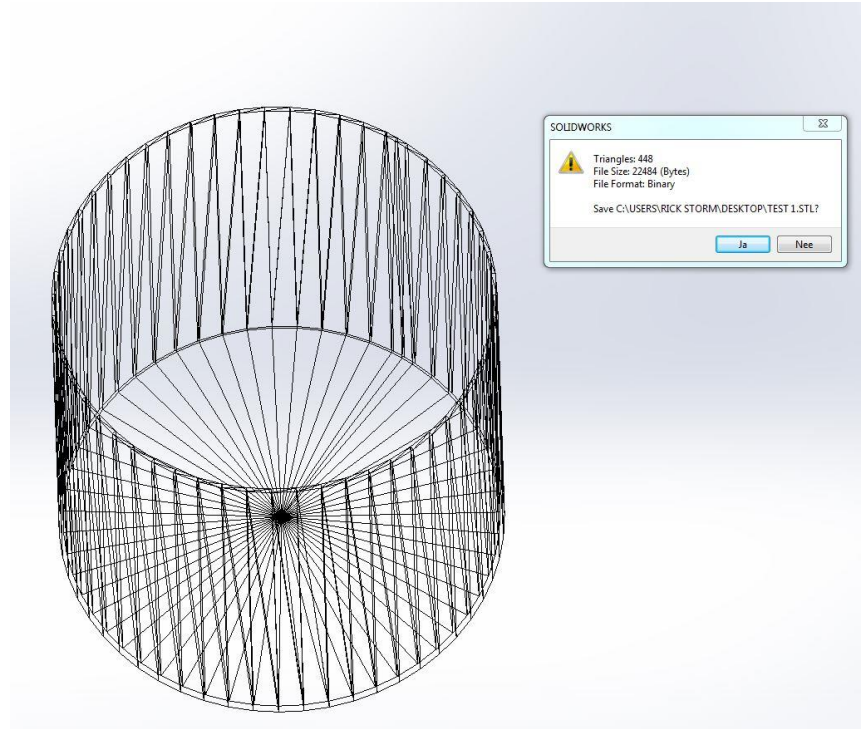
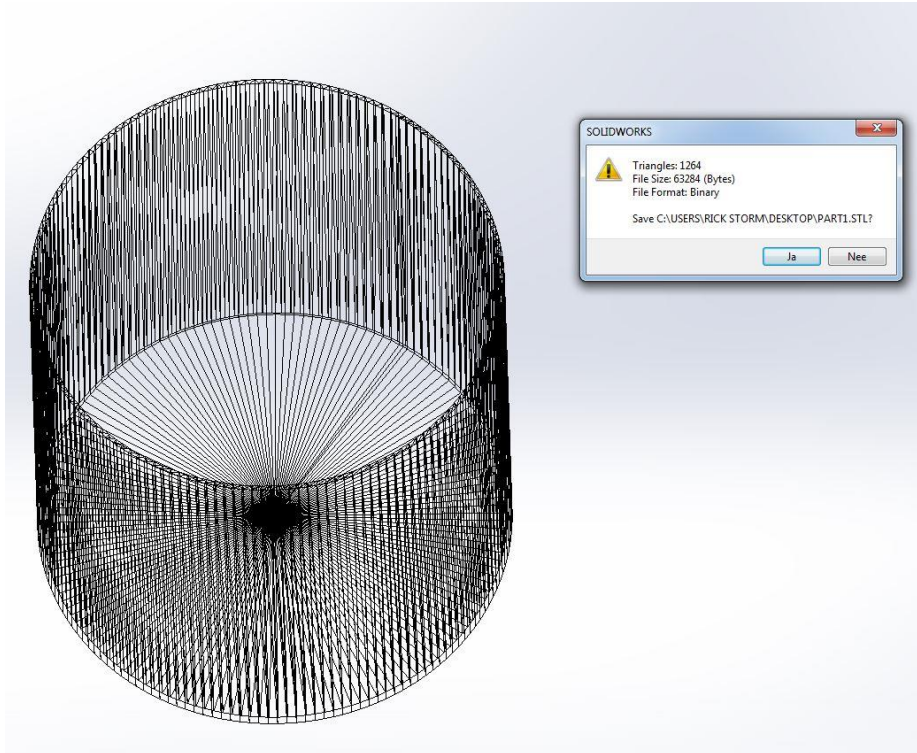


options

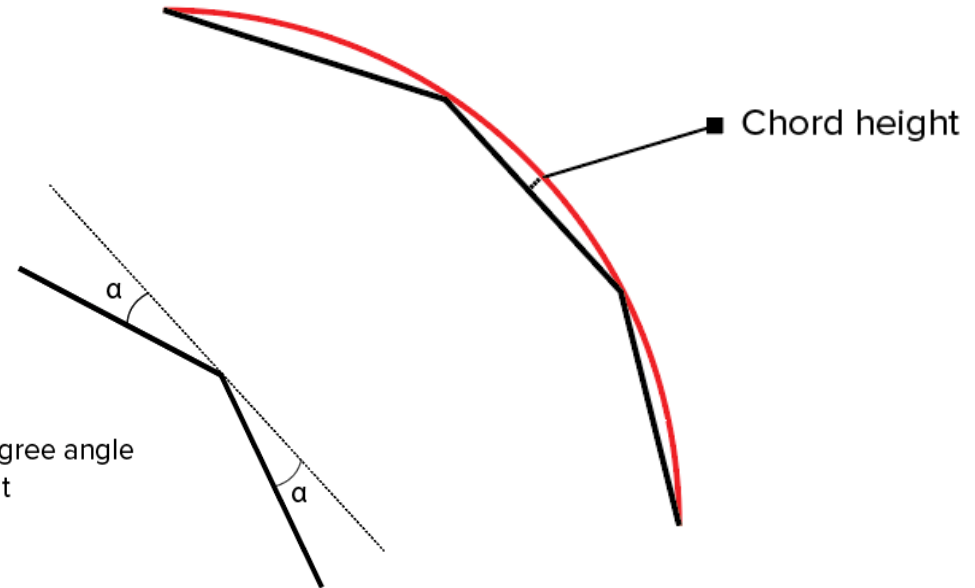
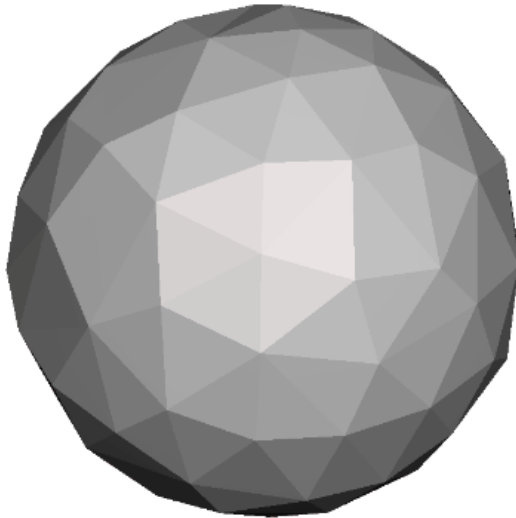
STL bestand



STL bestand



STL bestand



$\alpha = 15$ degree angle
by default

kies een afstand 0.05 mm.

Waarom Exporteren met een tolerantie kleiner dan 0,05 mm omdat printers niet in staat zijn af te drukken in die detail.